

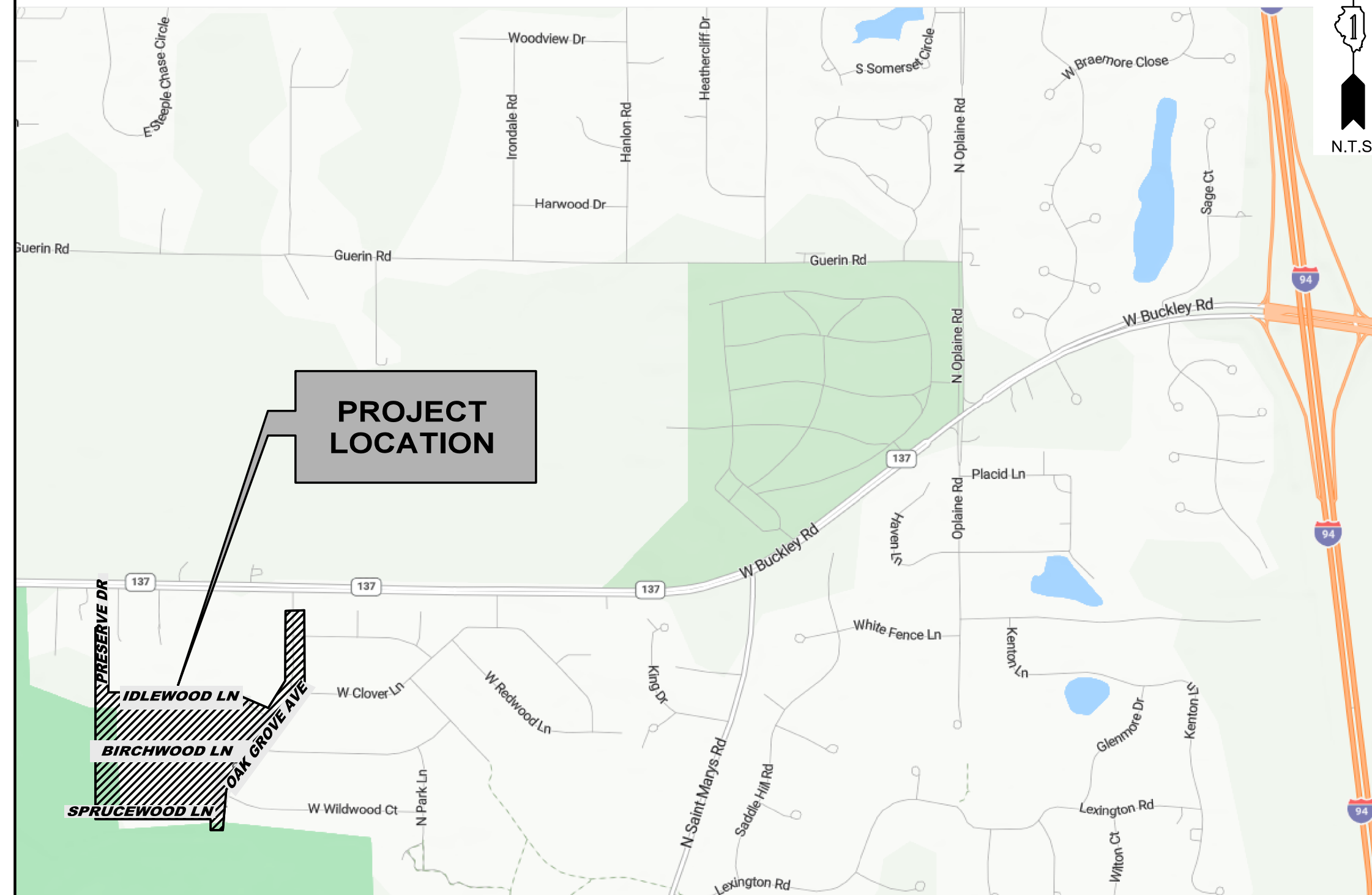
COUNTRYSIDE MANOR WATER MAIN REPLACEMENT PROJECT

MARCH 25, 2026

INDEX

SHT #	DRAWING TITLE
1	TITLE PAGE
2	GENERAL NOTES
3	WATER MAIN NOTES AND QUANTITIES
4	OVERALL PLAN
5	TIES, CONTROL POINTS, AND BENCHMARKS
6	PLAN AND PROFILE - 1
7	PLAN AND PROFILE - 2
8	PLAN AND PROFILE - 3
9	PLAN AND PROFILE - 4
10	PLAN AND PROFILE - 5
11	PLAN AND PROFILE - 6
12	PLAN AND PROFILE - 7
13	PLAN AND PROFILE - 8
14	PLAN AND PROFILE - 9
15	PLAN AND PROFILE - 10
16	PLAN AND PROFILE - 11
17	PLAN AND PROFILE - 12
18	PLAN AND PROFILE - 13
19	PLAN AND PROFILE - 14
20	LCPWD DETAIL SHEETS
21	CIVIL DETAILS SHEET
22	EROSION CONTROL DETAILS

LOCATION / VICINITY MAP



NOTES

1. DRAWINGS SHALL BE USED AS A COMPLETE SET ONLY. DO NOT SEPARATE SHEETS.
2. THE LAKE COUNTY PUBLIC WORKS AND CHRISTOPHER B. BURKE ENGINEERING, LTD SHALL BE NOTIFIED IN WRITING BY THE CONTRACTOR AT LEAST THREE (3) FULL WORKING DAYS PRIOR TO CONSTRUCTION.

DESCRIPTION OF WORK

THE CONTRACTOR SHALL PROVIDE ALL MATERIALS, EQUIPMENT, LABOR, AND SERVICES NECESSARY FOR THE CONSTRUCTION, INSTALLATION, AND TESTING OF APPROXIMATELY 6,900 LINEAR FEET OF NEW 6" AND 8" WATER MAIN ALONG OAK GROVE AVE FROM APPROX. 200' NORTH OF FAIR LN TO THE DEAD END IN THE SOUTH, ALONG SPRUCEWOOD, BIRCHWOOD, AND IDLEWOOD LANES THEN CONNECTING TO EXISTING 6" WATER MAIN IN PRESERVE DR.

THE PROJECT INCLUDES NEW VALVES IN VAULTS, FIRE HYDRANTS, RESIDENTIAL SERVICE LINES AND WATER SERVICE BOXES / VALVES, COORDINATION OF SHUTDOWN CONNECTIONS TO THE EXISTING WATER FACILITIES, AND COMPLETE RESTORATION OF THE AREA DISTURBED BY CONSTRUCTION ACTIVITIES.

PERMITS

1. IEPA CONSTRUCTION PERMIT
2. WATERSHED DEVELOPMENT PERMIT

ADDENDUM 1
MARCH 25, 2026

SEE SITE BENCHMARKS
ON DRAWING 5

LOCATION

THE PROJECT IS LOCATED INSIDE COUNTRYSIDE MANOR IN THE STREETS OF OAK GROVE AVE, SPRUCEWOOD LN, BIRCHWOOD LN, IDLEWOOD LN, AND PRESERVE DR.

CALL JULIE 811
WITH THE FOLLOWING:
COUNTY: LAKE
CITY-TOWNSHIP: LIBERTYVILLE
T44N-R11E 10
48 HOURS BEFORE YOU DIG.
EXCLUDING SAT., SUN., & HOLIDAYS

THE CONTRACTOR SHALL BE SOLELY RESPONSIBLE FOR JOB SITE SAFETY AS WELL AS SUPERVISION/DIRECTION AND MEANS/METHODS OF CONSTRUCTION



John P. Caruso
ENGINEER
DATE: 3/23/2026
JOHN P. CARUSO, P.E.
ILLINOIS REGISTRATION No. 062.048356
EXPIRATION DATE: 11/30/2027

CLIENT :



CHRISTOPHER B. BURKE ENGINEERING, LTD.
9575 W. Higgins Road, Suite 600
Rosemont, Illinois 60018
(847) 823-0500

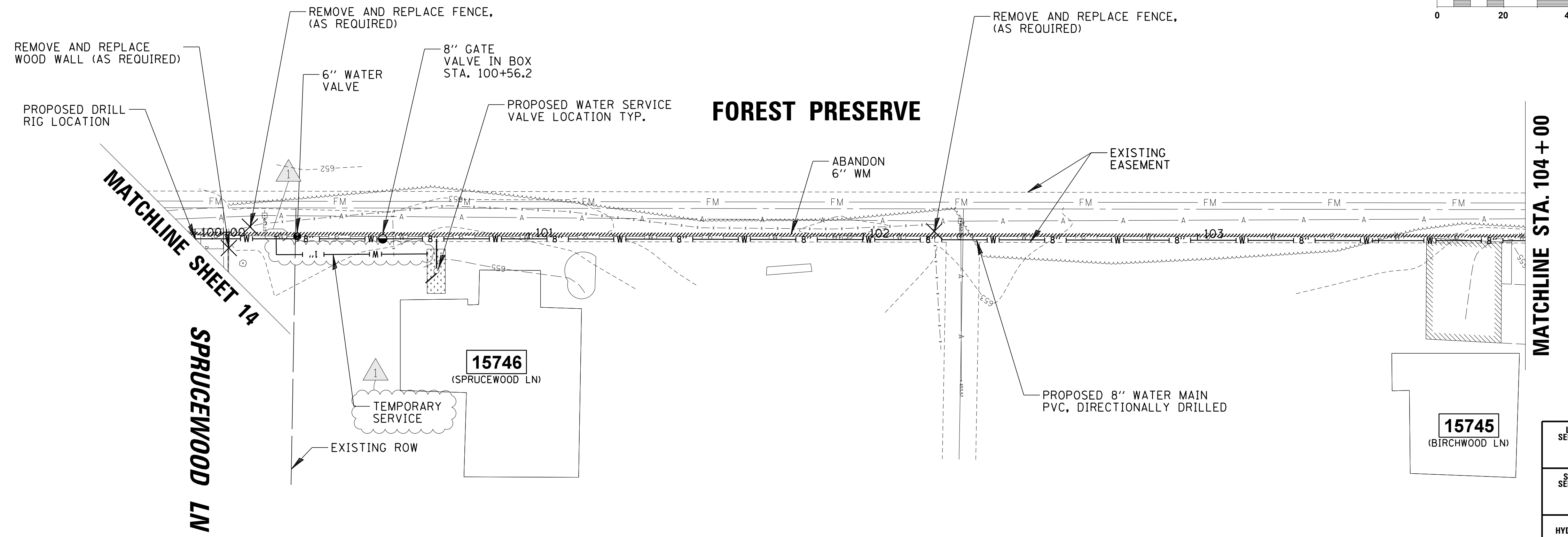
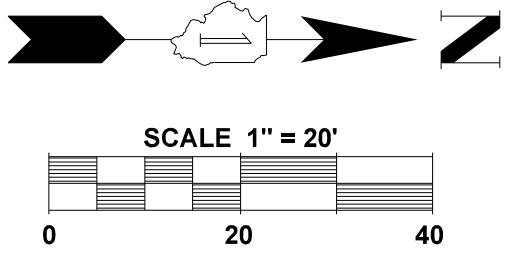
PROFESSIONAL DESIGN FIRM NO. 184-001175
EXPIRATION DATE: 04/23/27

SHEET 1 OF 22
CBEL PROJECT NO. 23-0629.00001

RESTORATION LEGEND

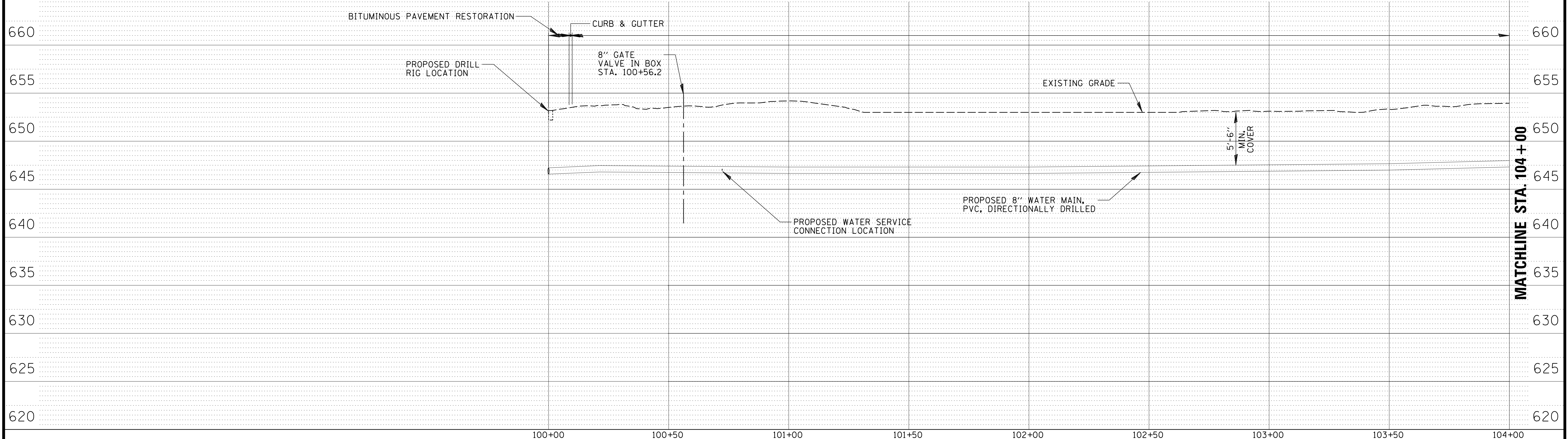
- SEEDING, CLASS 1
- PAVEMENT RESTORATION
- DRIVEWAY RESTORATION
- CURB AND GUTTER RESTORATION

1. SEE TYPICAL LONG & SHORT WATER SERVICE RECONNECTION DETAIL SHEET 2



MATCHLINE STA. 104 + 00

LONG SERVICES	0
SHORT SERVICES	1
FIRE HYDRANTS	0



MATCHLINE STA. 104 + 00

CHRISTOPHER B. BURKE ENGINEERING, LTD.
 9575 W. Higgins Road, Suite 600
 Rosemont, Illinois 60018
 (847) 823-0500

CLIENT:

NO.	DATE	NATURE OF REVISION	CHKD.	MODEL:
1	3/25/26	ADDENDUM 1	JPC	szanon1
FILE NAME		N:\LCPWD\230629\230629.00001\Mech\06-PPI.230629.00001.SHT		

TITLE: **COUNTRYSIDE MANOR WATER MAIN REPLACEMENT PROJECT**

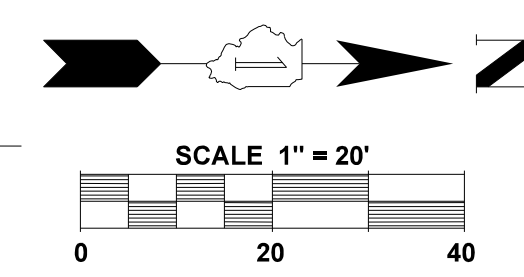
PLAN AND PROFILE - 1

PROJ. NO. 23-0629.00001
 DATE: 3/25/2026
 SHEET 6 OF 22
 DRAWING NO. **6**

RESTORATION LEGEND

- SEEDING, CLASS 1
- PAVEMENT RESTORATION
- DRIVEWAY RESTORATION
- CURB AND GUTTER RESTORATION

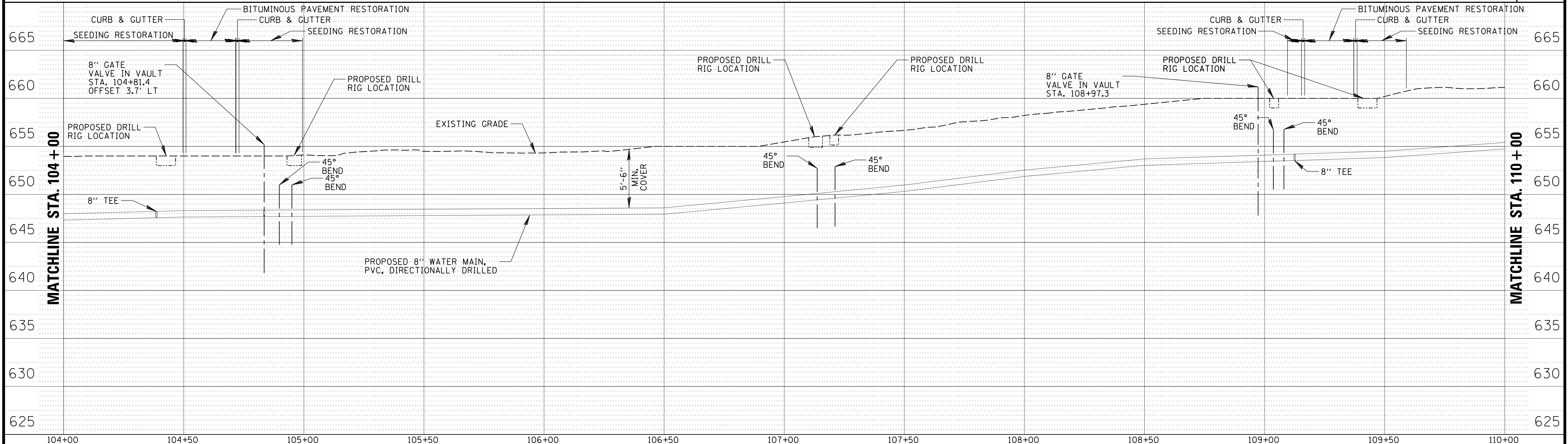
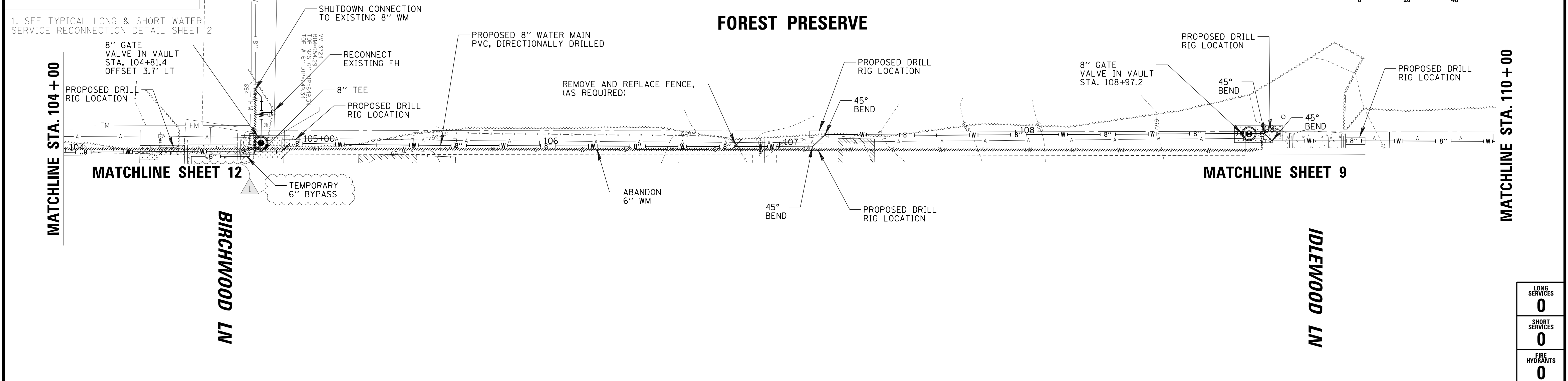
1. SEE TYPICAL LONG & SHORT WATER SERVICE RECONNECTION DETAIL SHEET 2



MATCHLINE STA. 104+00

MATCHLINE STA. 110+00

FOREST PRESERVE



LONG SERVICES	0
SHORT SERVICES	0
FIRE HYDRANTS	0

CHRISTOPHER B. BURKE ENGINEERING, LTD.
 9575 W. Higgins Road, Suite 600
 Rosemont, Illinois 60018
 (847) 823-0500

CLIENT:

NO.	DATE	NATURE OF REVISION	CHKD.	MODEL:
1	3/25/26	ADDENDUM 1	JPC	szanon1
FILE NAME		N:\LCPWD\230629\230629.00001\Mech\07-PP2.230629.00001.SHT		

TITLE: **COUNTRYSIDE MANOR WATER MAIN REPLACEMENT PROJECT**

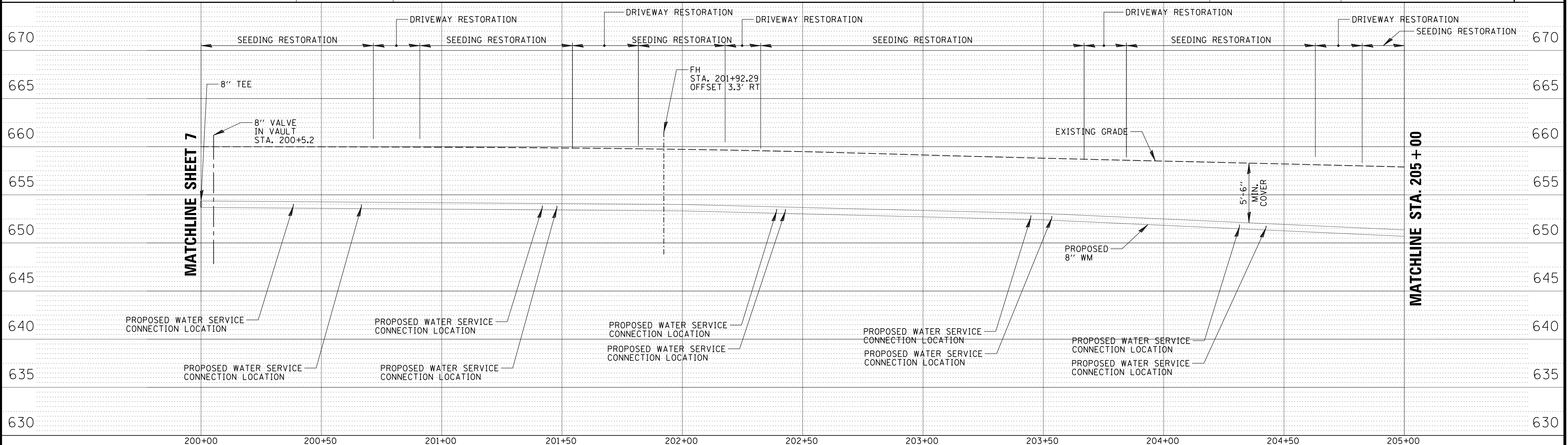
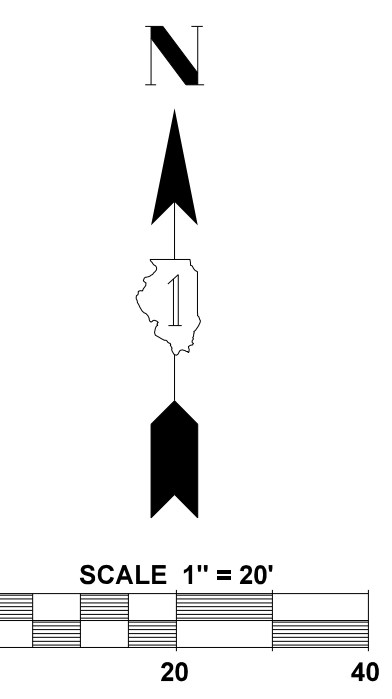
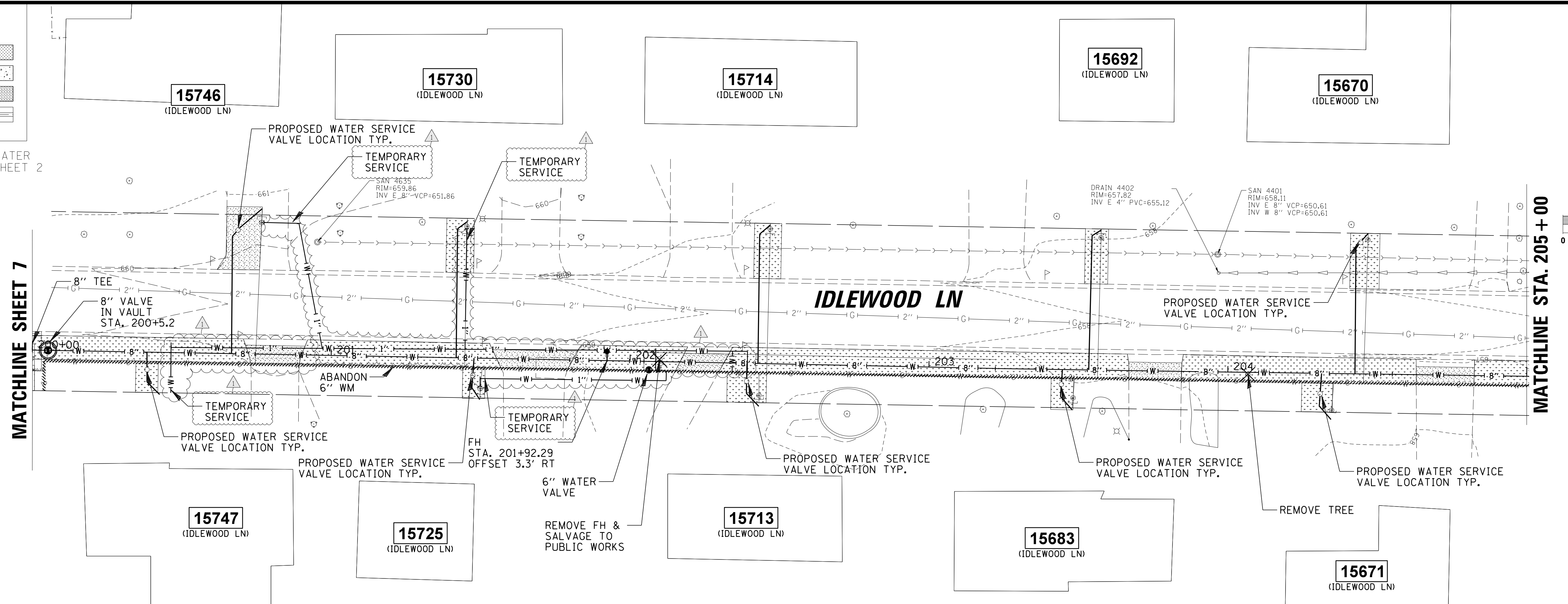
PLAN AND PROFILE - 2

PROJ. NO.	23-0629.00001
DATE:	3/25/2026
SHEET	7 OF 22
DRAWING NO.	7

RESTORATION LEGEND

- SEEDING, CLASS 1
- PAVEMENT RESTORATION
- DRIVEWAY RESTORATION
- CURB AND GUTTER RESTORATION

1. SEE TYPICAL LONG & SHORT WATER SERVICE RECONNECTION DETAIL SHEET 2



LONG SERVICES	5
SHORT SERVICES	5
FIRE HYDRANTS	1

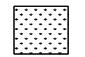


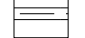
CHRISTOPHER B. BURKE ENGINEERING, LTD.
 9575 W. Higgins Road, Suite 600
 Rosemont, Illinois 60018
 (847) 823-0500

CLIENT:
Lake County
 Department of Public Works

NO.	DATE	NATURE OF REVISION	CHKD.	MODEL:
1	3/25/26	ADDENDUM 1	JPC	Default
FILE NAME		N:\LCPWD\230629\230629.00001\Mech\09-PP4_230629.00001.SHT		

DSGN. DWN.	SMZ	TITLE: COUNTRYSIDE MANOR WATER MAIN REPLACEMENT PROJECT	PROJ. NO. 23-0629.00001
CHKD. JPC	JPC		DATE: 3/25/2026
SCALE: 1:20	PLOT DATE: 3/25/2026	DRAWING NO. 9	SHEET 9 OF 22
CAD USER: szanon1	MODEL: Default		PLAN AND PROFILE - 4

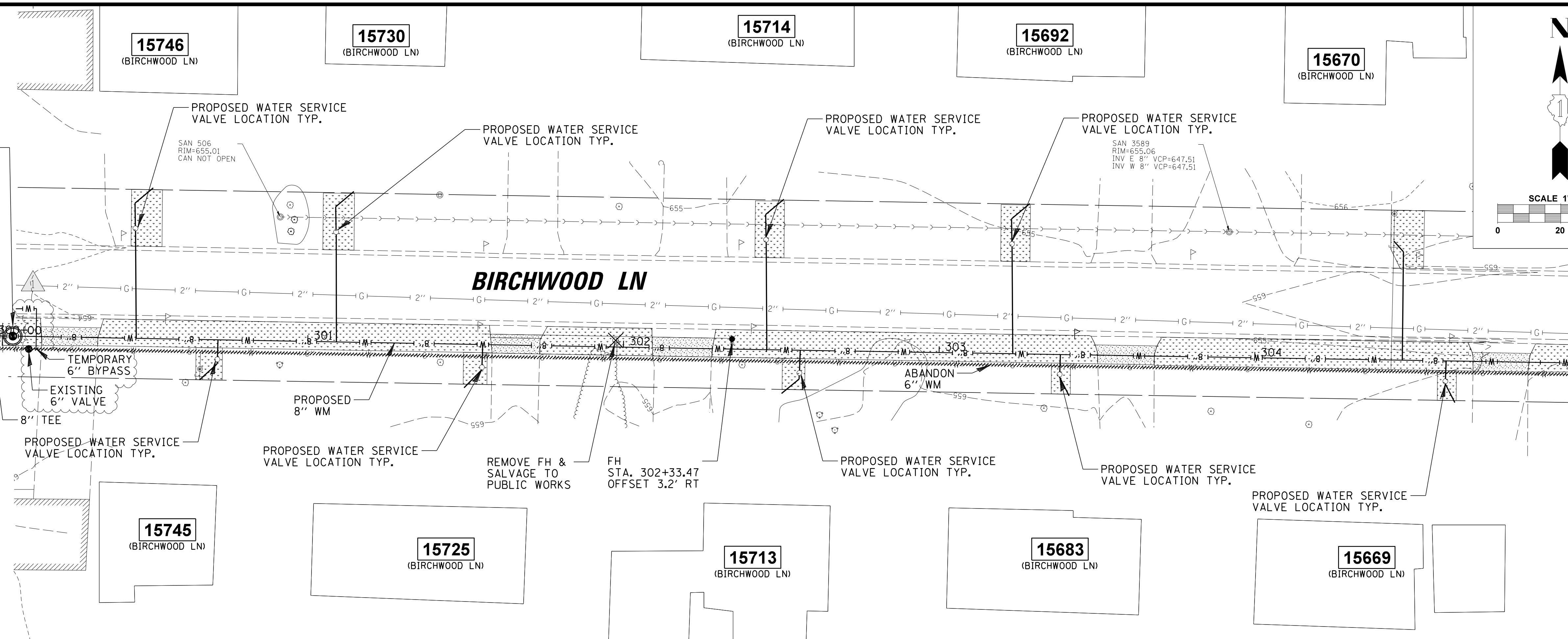
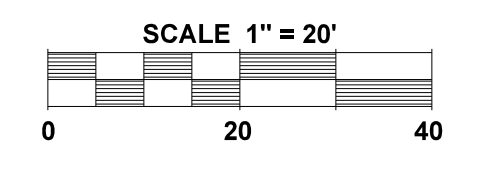
RESTORATION LEGEND

- SEEDING, CLASS 1 
- PAVEMENT RESTORATION 
- DRIVEWAY RESTORATION 
- CURB AND GUTTER RESTORATION 

1. SEE TYPICAL LONG & SHORT WATER SERVICE RECONNECTION DETAIL SHEET 2

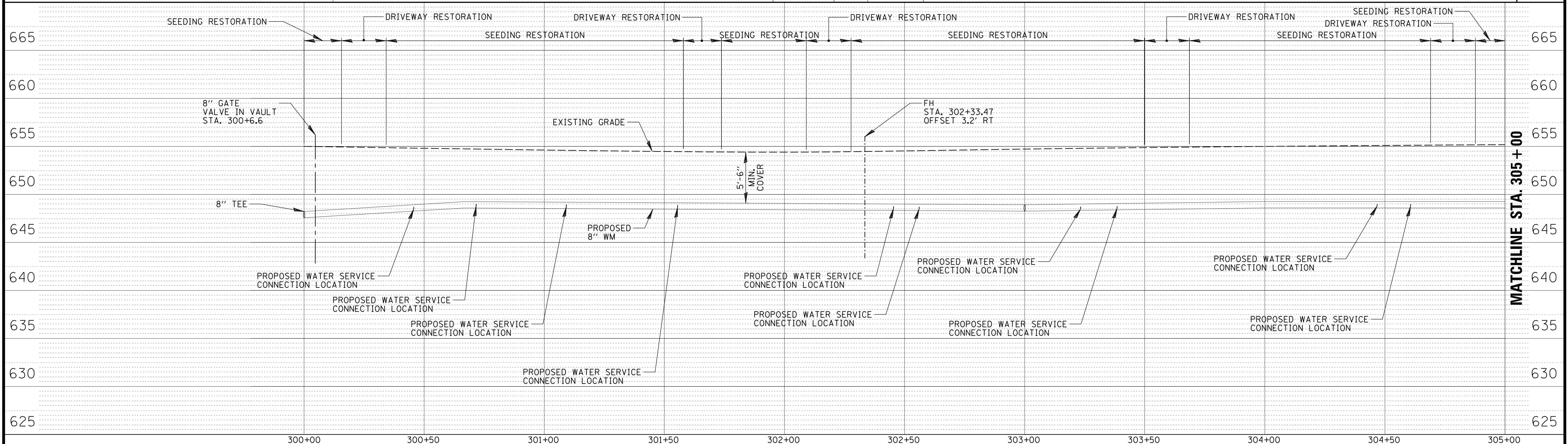
8" GATE VALVE IN VAULT STA. 300+6.6

MATCHLINE SHEET 7



MATCHLINE STA. 305 + 00

LONG SERVICES	5
SHORT SERVICES	5
FIRE HYDRANTS	1



MATCHLINE STA. 305 + 00

CHRISTOPHER B. BURKE ENGINEERING, LTD.
 9575 W. Higgins Road, Suite 600
 Rosemont, Illinois 60018
 (847) 823-0500

CLIENT: 

NO.	DATE	NATURE OF REVISION	CHKD.	MODEL:
1	3/25/26	ADDENDUM 1	JPC	szanon1
FILE NAME		N:\LCPWD\230629\230629.0000\Mech\12-PP7_230629.0000.LSH		

TITLE: **COUNTRYSIDE MANOR WATER MAIN REPLACEMENT PROJECT**

PLAN AND PROFILE - 7

PROJ. NO.	23-0629.00001
DATE:	3/25/2026
SHEET	12 OF 22
DRAWING NO.	12