



Lake County Department of Public Works
West Pump Station Force Main Replacement
Bid #25223
Project #2022.116
Addendum#3 June 6, 2025

Please refer to the "Bid Documents & Technical Specifications and the Bidding Plans" for complete details. Statements, questions and answers below are added for emphasis.

Questions and Clarifications:

1. Question: From the pre-bid meeting; Will the contractor be required to use matting to access the West Pump Station via Vernon Hill's Kid's Castle Park and walking path?

Answer: Please refer to the *Site Access* pay item starting on page 7 in the Technical Specifications from the bid documents as well as the site access drawing in the plans. The contractor is fully responsible for all restoration resulting from their construction access activities and will not be paid for any restoration separately. Any deviation from the included plans may be submitted to the County and the Park District for approval but the Contractor shall bid the project as currently specified.

2. Question: Will a contractor be allowed to close the path leading to Kid's Castle Park and close the playground?

Answer: Please refer to the Site Access Plans on Sheet 5 of 27 in the project plans. The path leading to Kid's Castle Park and the playground shall remain open and accessible to the public during construction. However, temporary closures of the path to pedestrian traffic will be permitted as necessary to safely bring in materials and equipment. These closures must be limited in duration and scope, used only when required for safe site access, and the path shall be reopened as soon as it is safe to do so. Any open excavations or potentially hazardous areas must be properly secured at the end of each workday in accordance with the Temporary Construction Fencing pay item and all applicable safety standards.

3. Question: From the pre-bid meeting; How does a contractor gain access to the Village of Vernon Hills property at 50 North Fairway Drive (Memorial Arboretheater)?

Answer: Access to 50 North Fairway Drive shall be from the northern driveway entrance to the property off of Fairway Drive. No access to the Village property has been obtained from the adjacent property (100 North Fairway Drive). Any additional access, staging areas, or restoration from access operations, other than what is shown in the plans shall be the responsibility of the contractor.

4. Question: Will replacement trees be required at the same size, type and species as the ones that are removed with the project?

Answer: The following shall be added to the Tree and Shrub Installation specification:
Prior to ordering tree materials the Contractor shall coordinate with the County to determine if any deviations from the below species is proposed.

For all deciduous trees removed, the replacement shall conform to one replacement tree IDOT Standard:

A2000320 – TREE, ACER MIYABEI MORTON (STATE STREET MIYABE MAPLE), 2-1/2" CALIPER, BALLED AND BURLAPPED

For all coniferous trees removed, the replacement shall conform to one replacement tree IDOT Standard:

D2000196 – EVERGREEN, ABIES CONCOLOR (WHITE FIR), 8' HEIGHT, BALLED AND BURLAPPED

All references to the size and species to match existing are to be removed.

All replacement trees shall be installed in accordance with the specifications and must be approved by the Engineer prior to planting.

5. Question: Will a Lake County Division of Transportation permit be required for this work?

Answer: No permit from LCDOT is required for this project.

6. Question: For the pay item "Tree Installation, Match Existing Size & Species" can you confirm what will be required for the replacement trees?

Answer: Refer to question and answer #4 of this section for details regarding tree installation.

7. Question: Can you confirm the style of valves you will require for the project? The special provision is calling for "Valves shall be manufactured and tested in accordance with American Water Works Association (AWWA) Standard C512" and the detail in the plans is calling for gate valves.

Answer: Please refer to the plan details for valve installation. The project requires two different types of valves. The first type is the air release valves, which are detailed separately in the plans and are intended to release trapped air from the system. The second type consists of shut off valves located within the proposed valve vaults, which are standard gate valves. All gate valves shall meet AWWA C515 and be epoxy coated per AWWA C550.

8. Clarifications from the pre-bid meeting:

- a. The number of bore pits shown in the plans is the number suggested by the engineer of record. Per the Force Main Drilling and Receiving Pits specification the contractor must submit a drilling plan to be approved by the engineer.
- b. The project does contain floodway and floodplain associated with the Sevey Drainage Ditch. No permanent grading modifications are allowed within the floodway or floodplain.
- c. Any additional staging areas outside of what is shown in the plans shall be the responsibility of the contractor, no additional compensation will be provided.
- d. The number of shutdowns to the West Pump Station and the Milwaukee Avenue Pump Station are limited due to the existing flow that these stations handle and the Lake County staff time that is required for each shutdown. If a contractor cannot make the connections within the allotted two hour shut down period, per the sequencing sheets shown in the plans, the wet wells of the stations shall be pumped down via the use of vacuum truck(s). The cost of performing this work shall be included in the cost of the Contract.
- e. It was stated at the pre-bid meeting that it is mandatory that the contractors bid on the Base Bid, Alternate #1 Bid and the Supplemental Unit Pricing contained on the Bid Form. The Substitution Pricing for both the Base Bid and Alternate #1 Bid are optional.
 - i. Note 1 in the Bid Form on sheet B-16 of the Specifications is revised to read: TO BE CONSIDERED RESPONSIVE, BIDDER MUST SUPPLY PRICING INFORMATION FOR EVERY BID ITEM (1 TO 42-49, FOR BASE BID) (1 TO 44 50 FOR ALTERNATE #1 BID) & ALL SUPPLEMENTAL UNIT PRICING (A THRU G E, FOR BASE BID) (A THRU G E, FOR ALTERNATE #1 BID). SUBSTITUTION PRICING IS NOT REQUIRED.

Specification Amendments:

1. Section 4.02 of the contract documents shall be deleted and replaced with the following:

4.02 – Days to Achieve Substantial Completion and Final Payment

A. BASE BID:

The Work shall be substantially complete and operational by no later than May 1, 2026 and final completion shall be completed by June 1, 2026. Substantial and final completion shall be defined by Section 15 of the General Conditions.

B. ALTERNATE #1 BID:

The Work shall be substantially complete and operational by no later than October 2, 2026 and final completion shall be completed by November 2, 2026. Substantial and final completion shall be defined by Section 15 of the General Conditions.

2. The Erosion Control Installation Section of the Technical Specifications shall be amended to include the following:

Construction Requirements: Coir Logs as shown on the drawings and plan details shall be installed prior to mobilizing equipment to install the proposed sanitary sewer. Additional coir logs as needed based on the contractors operations shall be installed to prevent sediment from leaving the construction areas as determined necessary by the County.

Method of Measurement: Coir Logs as shown on the contract documents shall be paid for per linear foot installed as marked out in the field by the engineer.

Basis of Payment: Coir logs will be paid for at the contract unit price per linear foot for "Silt Fence"

Plan Changes:

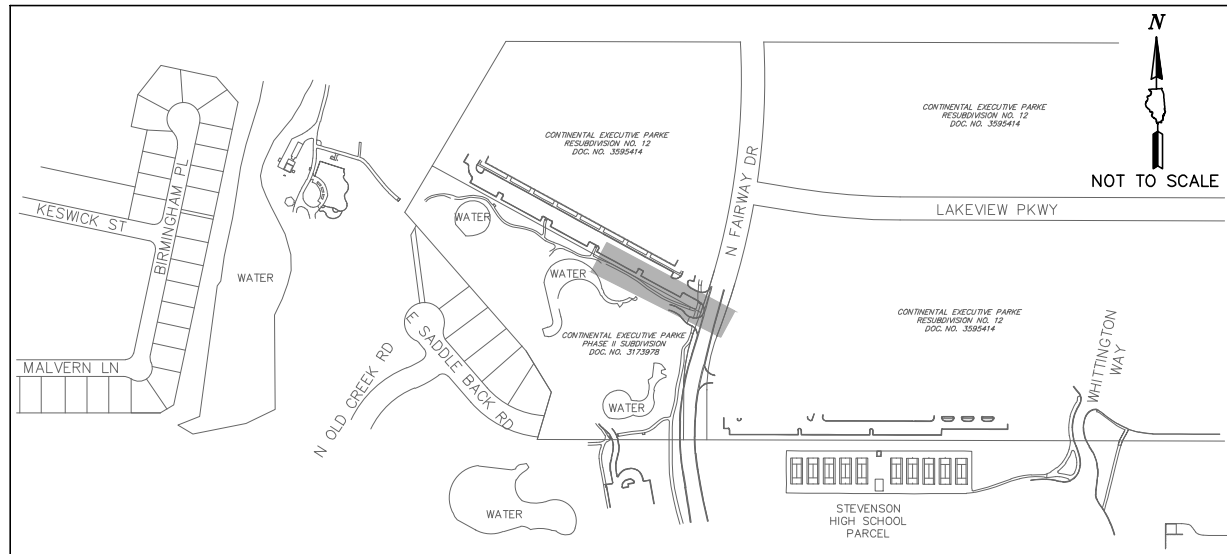
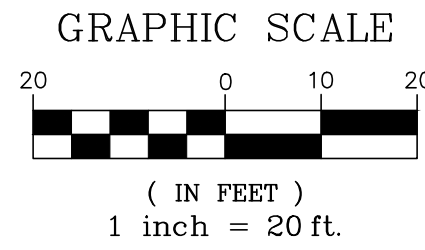
1. Sheets 7 and 8 of the Civil Engineering plan set have been revised to provide information regarding the coir log installation. The Contract Documents shall be amended to replace the existing Sheets 7 and 8 with the revised versions.
2. Sheets 25 and 26 of the Civil Engineering plan set have been revised to include additional details for coir log installation, and silt fence splicing. The Contract Documents shall be amended to replace the existing Sheets 25 and 26 with the revised versions.



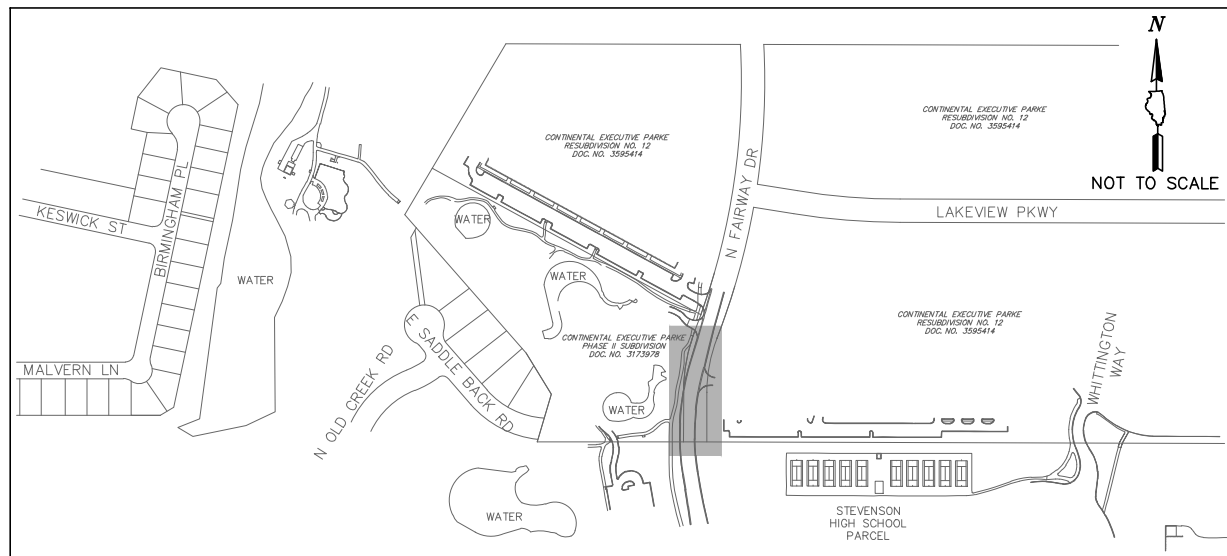
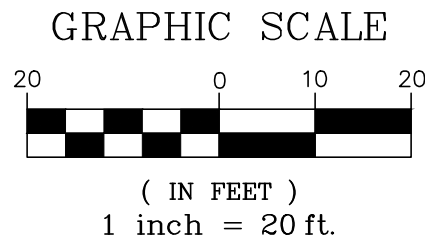
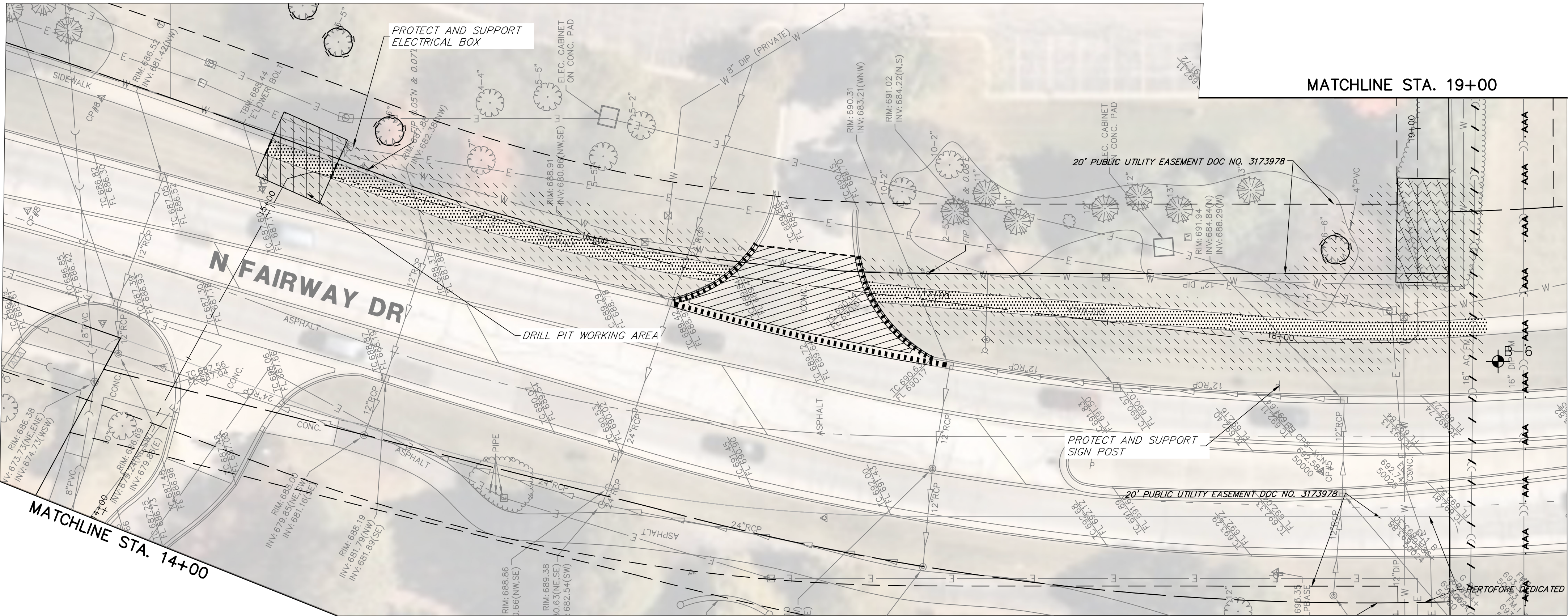
MATCHLINE STA. 14+00

DEMOLITION/EROSION CONTROL LEGEND

- DRILL PIT WORKING AREA
- PAVEMENT PATCH
- EARTH/GRAVEL REMOVAL
- SIDEWALK REMOVAL
- CONCRETE REMOVAL
- COMBINATION CURB AND GUTTER REMOVAL
- TREE/SHRUB REMOVAL
- TREE TRUNK PROTECTION FENCE
- UTILITY TO BE ABANDONED IN PLACE (BASE BID)
- UTILITY TO BE ABANDONED IN PLACE (ALT BID #1)
- UTILITY TO BE REMOVED
- STRUCTURE TO BE ABANDONED IN PLACE
- STRUCTURE TO BE REMOVED
- PERIMETER EROSION BARRIER
- PAVEMENT SAWCUT
- SOIL BORING
- COIR LOG



KEY MAP



KEY MAP

GHA **GEWALT HAMILTON**
ASSOCIATES, INC.

625 Forest Edge Drive ■ Vernon Hills, IL. 60061
TEL 847.478.9700 ■ FAX 847.478.9701

COPYRIGHT NOTICE
This drawing is the property of Gewalt-Hamilton Assoc., Inc. and is not to be used for any purpose other than the specific project and site named herein, and cannot be reproduced in any manner without the express written permission from Gewalt-Hamilton Associates, Inc.

EXIST. COND./DEMO. (STA 10+50 TO 19+00)

VERNON HILLS FORCE MAIN REPLACEMENT
LAKE COUNTY DEPARTMENT OF PUBLIC WORKS
LAKE COUNTY, ILLINOIS

NO.	BY	DATE	REVISION
1	WR	06.06.25	ADDENDUM 1

NO.	BY	DATE	REVISION

FILE: 5600.015-PR7.dwg	SHEET NUMBER:
DRAWN BY: PL DATE: 05.09.2025	GHA PROJECT # 5600.015
CHECKED BY: WR DATE: 05.09.2025	SCALE: 1" = 20'

8
OF 27 SHEETS

