

**From:** [Stacy Davis](#)  
**To:** [DavisWynn, Stacy](#)  
**Date:** Monday, October 07, 2019 2:32:40 PM

---







240/120 Volt  
No. 12-158296

USE PROTECTIVE PANTS & GLOVES  
NEVER WORK ON ENERGIZED EQUIPMENT

**DANGER!**  
ELECTRIC SHOCK, BURN OR FATAL INJURY  
CAUTION: OPEN PANEL DOOR TO REMOVE COVER

Prostock II AQU Panel  
**240/120 Volt**  
Use QB Breakers ONLY

PANELBOARD  
LISTED  
No. A-12-158296



Panelboard data sheet with columns for Breaker, Amps, and other specifications.

Breaker	Amps	Volts	Phase	Notes
1	20	240	1P	
2	20	240	1P	
3	20	240	1P	
4	20	240	1P	
5	20	240	1P	
6	20	240	1P	
7	20	240	1P	
8	20	240	1P	
9	20	240	1P	
10	20	240	1P	

**DANGER!**  
WARNING: High Voltage  
Electrical Shock Hazard  
Do not touch any exposed  
parts of the panel or  
equipment inside the panel.  
Always use proper safety  
procedures when working  
on electrical equipment.

Prostock II AQU Panel  
**240/120 Volt**  
Use QB Breakers ONLY

**PANELSCHAF**  
LISTED  
No. A 02162296



Panel schedule and wiring diagram showing circuit details, including breaker ratings and wiring configurations.



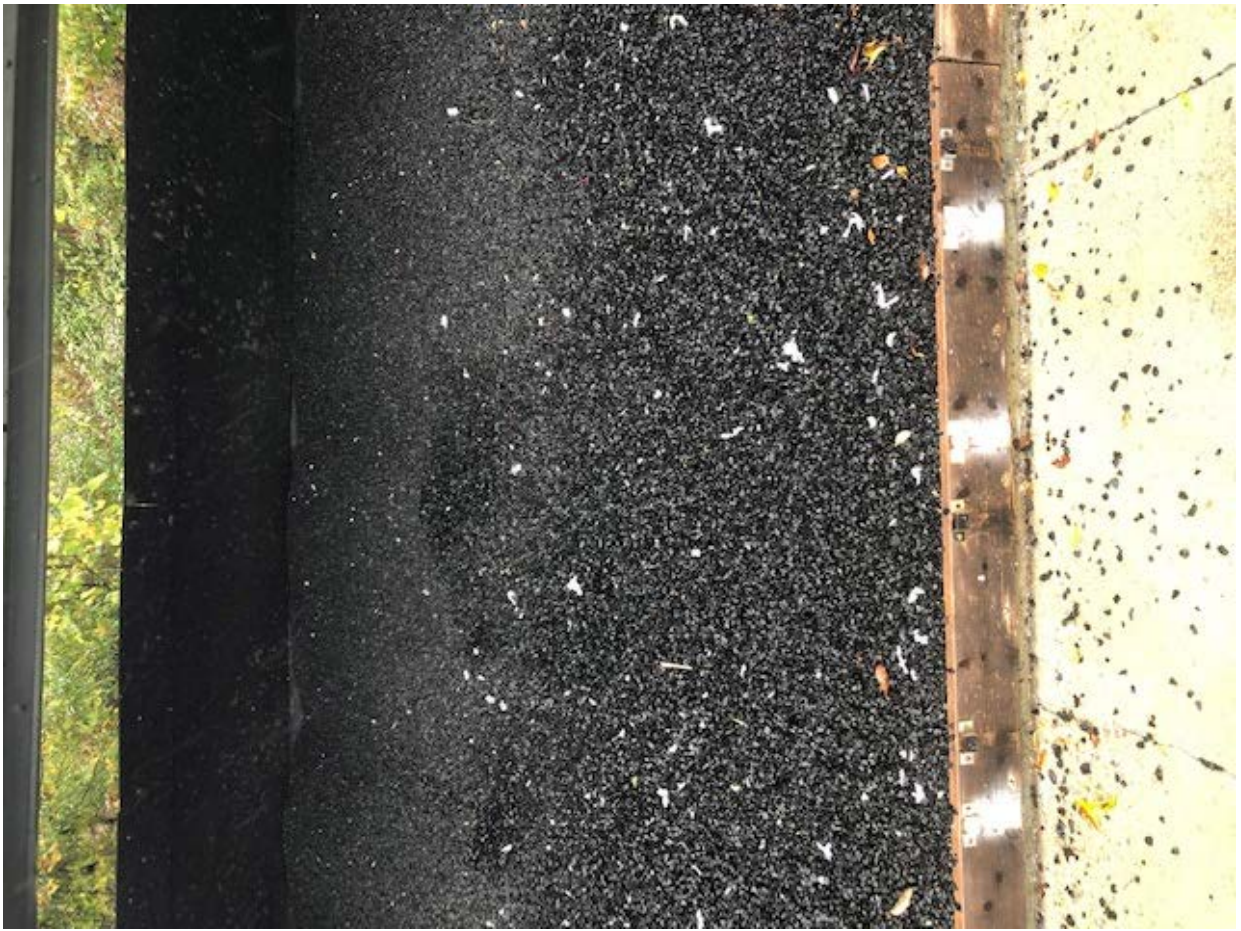




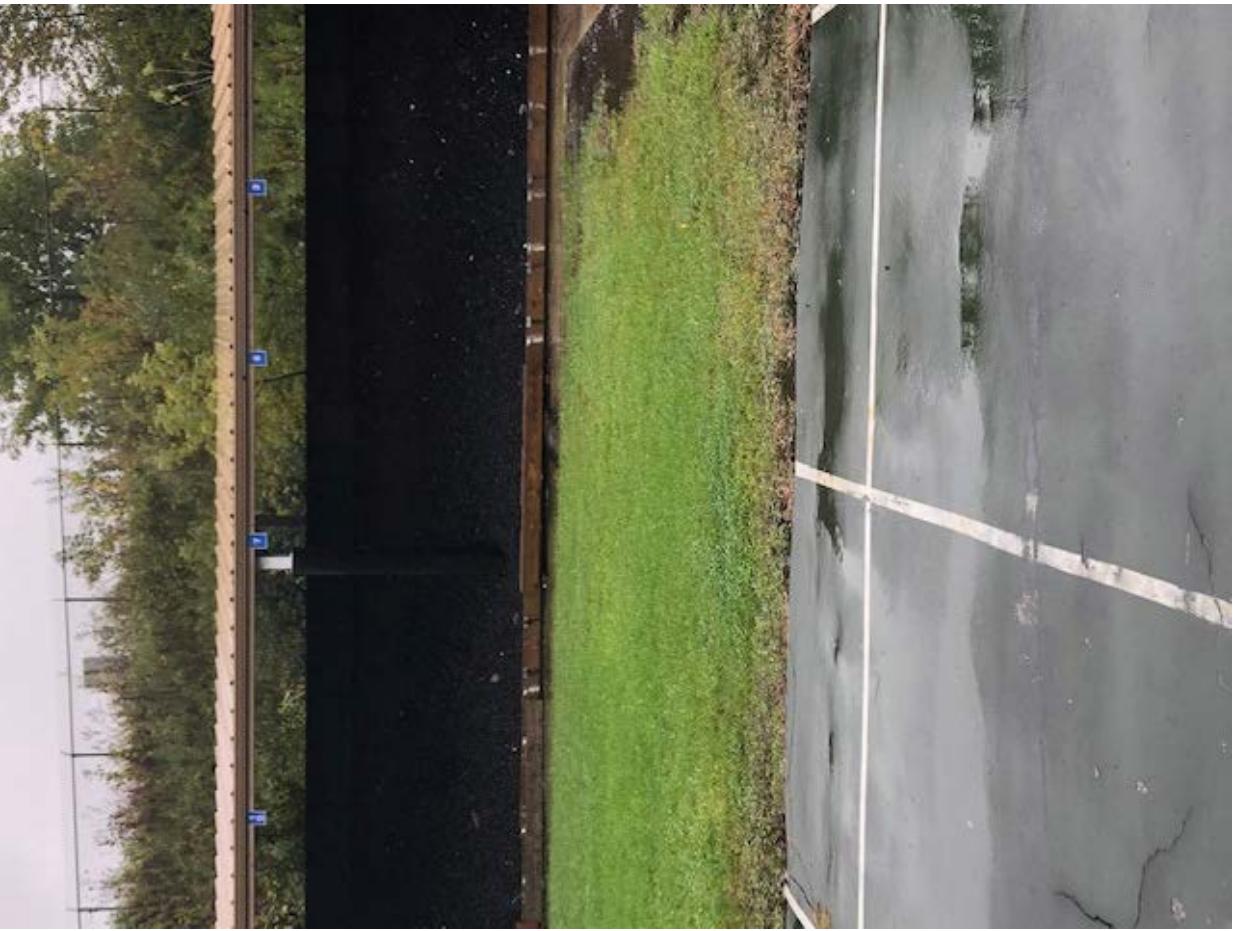




















Stacy Davis-Wynn