

**ADDENDUM NO. 3
TO THE
BIDDING DOCUMENTS
FOR
VERNON HILLS WATER SYSTEM ELECTRICAL AND MECHANICAL UPGRADE
FOR
LAKE COUNTY PUBLIC WORKS**

LAKE COUNTY CONTRACT NO. 19062

DATE: May 9, 2019

BID CLOSING DATE & TIME: 11:00 AM local time, May 15, 2019

TO ALL BIDDERS BIDDING ON THE ABOVE PROJECT:

All Bidders submitting a Bid on the above Contract shall carefully read this Addendum and give it consideration in the preparation of their Bid.

I. The following are revisions to the Drawings:

- A. Sheet 11 (SDS-ED-1): Add Plan Note 7 diamond to circuit 32 on LP-1 Panel Schedule.
- B. Sheet 17 (BWT-ED-1): Revise Plan Note diamond located at circuits 2 and 4 on BWT-LP-1 to Plan Note 4.
- C. Sheet 22 (HWT-ED-1): Delete labels on conductors entering and leaving Meter Enclosure and replace with the following:

“3#3, 1#8 GRD. 2” C.”
- D. Sheet 27 (HCR-ED-2): Delete “SPARE” from HCR-LP-1, circuit 7 and replace with the following:

“Fire Alarm Panel HCR-LCP-1”
- E. Sheet 29 (HCR-R-1): Add Plan Note 2 diamond to Existing Motor Control Center located on west wall.
- F. Sheet 29 (HCR-R-1): Add the following General Note immediately after General Note 11:

“12. Any exposed conduits not being reused shall be removed.”
- G. Sheet 37 (HCR-EN-1): Delete home run label for HCR-T-1 and replace with the following:

“HCRPP1-25,27,29”
- H. Sheet 37 (HCR-EN-1): Add home run to HCR-LCP-1 (Hex ID 045) with the following label:

“HCRLP1-7”
- I. Sheet 39 (HCR-EL-1), Plan Note 3: Delete “...pointing right” and replace with “...pointing left”

J. Sheet 54 (CWR-ED-1): Delete label on conductors routing from CWR-MCC-1 disconnect to CWR-MCC-1 main lugs and replace with the following:

“4#600KCMIL, 1#3 GRD. 3” C.”

K. Sheet 56 (CWR-R-1): Replace entire sheet with Sheet 56 attached to this Addendum.

L. Sheet 60 (CWR-EN-1): Replace entire sheet with Sheet 60 attached to this Addendum.

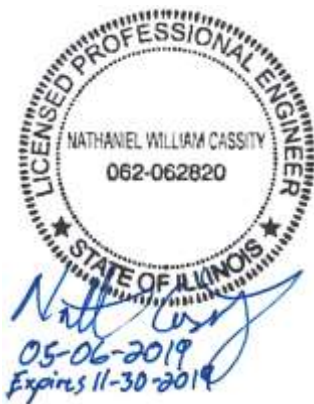
M. Sheet 68 (999-E-1): Add the following Plan Note to the Plan Notes list:

“2. Coordinate location and installation of ground rods with site piping and electrical duct banks; adjust ground rods as required.”

II. Any revisions to any of the Contract Documents made by this Addendum shall be considered as the same revision to any and all related areas of the Contract Documents not specifically called out in this Addendum.

III. The Bidder shall acknowledge receipt of this Addendum by filling out and including the Addendum Acknowledgement form, located in the Bid Specifications, as an attachment to the Bid.

DONOHUE & ASSOCIATES, INC.



Nathan Cassity, P.E

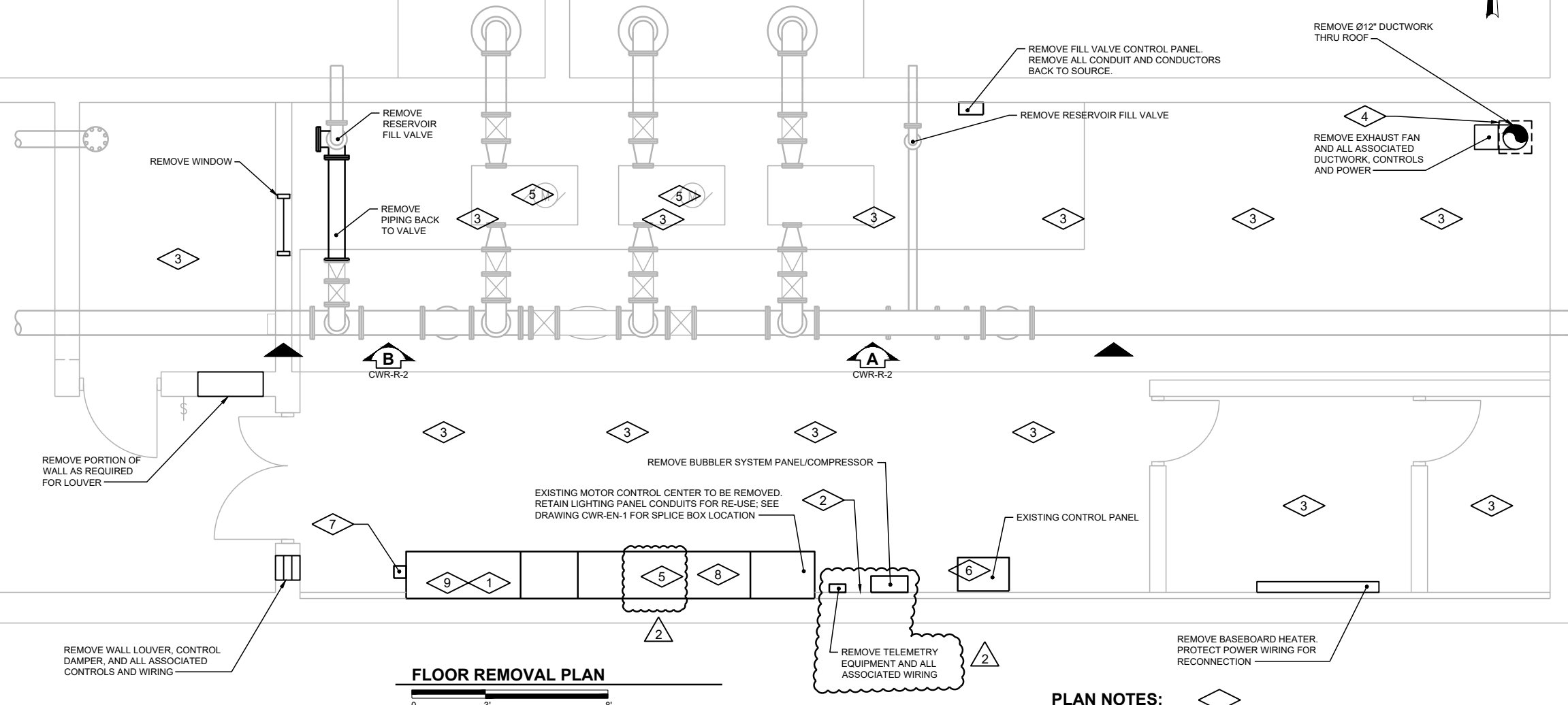


Michael Stohl, P.E

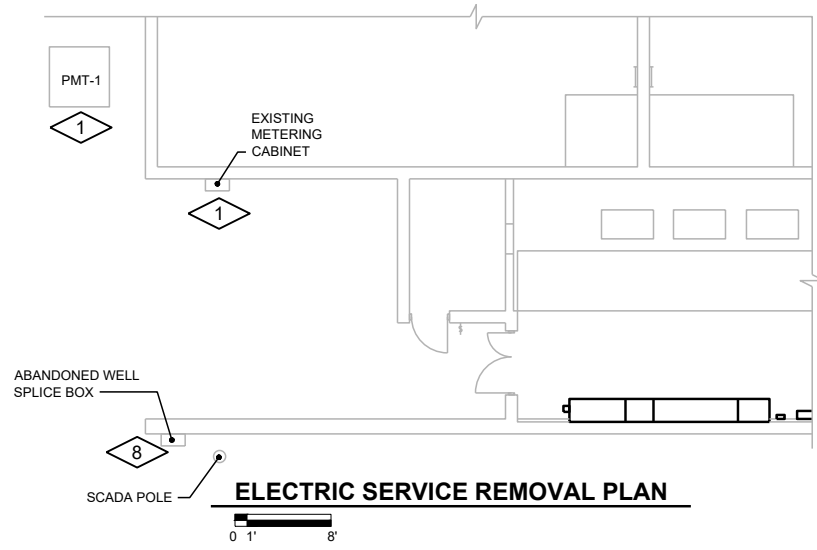


Timothy J. Bates, S.E.

END OF ADDENDUM #3



FLOOR REMOVAL PLAN
0 3' 8'



ELECTRIC SERVICE REMOVAL PLAN
0 1' 8'

GENERAL NOTES:

- CONTRACTOR TO FIELD VERIFY EXISTING CONDITIONS, DIMENSIONS, AND ELEVATIONS PRIOR TO CONSTRUCTION AND/OR FABRICATION.
- FULL TONE COMPONENTS TO BE REMOVED.
- SAWCUT AND REMOVE CONCRETE TO THE LIMITS NOTED. IN EXPOSED AREAS NOT COVERED BY NEW CONSTRUCTION, REMOVE REINFORCEMENT AND EMBEDMENTS 1" BEYOND FINISHED SURFACE AND PATCH SURFACE WITH PATCHING MORTAR TO MATCH ADJACENT FINISHED SURFACE.
- REMOVE CONCRETE ANCHORS, ANCHOR BOLTS, AND OTHER EMBEDMENTS FOR MATERIALS AND EQUIPMENT BEING REMOVED. IN EXPOSED AREAS NOT COVERED BY NEW CONSTRUCTION, REMOVE CONCRETE ANCHORS, ANCHOR BOLTS, AND OTHER EMBEDMENTS 1" BEYOND FINISHED SURFACE AND PATCH SURFACE TO MATCH ADJACENT FINISHED SURFACE.
- WHERE EQUIPMENT IS INDICATED TO BE REMOVED, REMOVE ALL ASSOCIATED POWER AND CONTROL WIRING AND CONDUIT BACK TO SOURCE. WHERE CONDUIT SYSTEM CONTAINS CIRCUITS TO OTHER EQUIPMENT THAT REMAINS, RETAIN THESE CIRCUITS AND RELOCATE EXISTING CONDUIT AND EXTEND EXISTING CIRCUITS AS REQUIRED FOR THE INSTALLATION OF NEW EQUIPMENT.
- REMOVE ALL SUPPORTS ASSOCIATED WITH REMOVED PIPING, DUCTWORK, CONDUIT, AND EQUIPMENT. REMOVE RODS AND FASTENERS FROM CEILINGS, FLOORS, AND WALLS WITH ARE. WHERE SURFACE HAS BEEN MARRED, CHIPPED, SPAWLED, ETC. AS A RESULT OF REMOVAL, PATCH AND PAINT TO MATCH ADJACENT FINISHED SURFACE.
- REMOVE EXISTING CONCRETE PADS OF ANY EQUIPMENT BEING REMOVED. REMOVE CONCRETE REINFORCEMENT A MINIMUM OF 1" BEYOND FINISHED SURFACE AT ANY LOCATION WHERE NEW CONCRETE PAD WILL NOT COVER ROUGH SURFACE OF REMOVED PAD. PATCH BACK TO FINISHED SURFACE WITH PATCHING MORTAR.
- WHERE OPENINGS ARE LEFT IN WALLS, SLABS, OR CEILINGS DUE TO REMOVED PIPING, EQUIPMENT, OR OTHER WORK, PATCH OPENING TO MATCH ADJACENT SURFACES UNLESS NOTED OTHERWISE. THE PERIMETER OF OPENINGS IN CONCRETE WALLS AND SLABS EXPOSED TO EARTH, WEATHER, OR WATER SHALL BE LINED WITH A GASKET TYPE WATERSTOP PRIOR TO PATCHING OF THE WALL. OPENINGS IN PRECAST CONCRETE ROOF MEMBERS ARE TO BE PATCHED WITH CONCRETE AND DOWELED TO THE EXISTING ROOF MEMBERS UNLESS NOTED OTHERWISE. ROOFING SYSTEM SHALL BE PATCHED TO PREVENT ANY LEAKING AT THE OPENING.
- PLAN NOTE DEPICTION FOR LIGHT FIXTURES IS ESTIMATE FOR EXISTING LIGHT FIXTURE LOCATIONS. CONTRACTOR TO FIELD VERIFY FOR EXACT FIXTURE COUNT SUCH THAT ALL INTERIOR LIGHT FIXTURES ARE REMOVED.
- SEE SECTION 01110 FOR PROJECT CONSTRAINTS.
- ANY EXPOSED CONDUITS NOT BEING REUSED SHALL BE REMOVED.

PLAN NOTES:

- CONTRACTOR SHALL DISCONNECT AND REMOVE SERVICE CONDUCTORS BACK TO EXISTING COMED TRANSFORMER; PROTECT CONDUIT FOR RE-USE.
- REMOVE RUBBER WALL BASE AS REQUIRED FOR NEW EQUIPMENT INSTALLATION.
- DISCONNECT AND REMOVE LIGHTING FIXTURES; PROTECT CONDUIT AND CONDUCTORS FOR RE-USE.
- REMOVE CONCRETE CEILING (ABOVE) AS REQUIRED FOR NEW DUCTWORK.
- DISCONNECT AND REMOVE CONDUCTORS BACK TO SOURCE; CUT AND CAP CONDUITS AT GRADE AT PUMP AND AT MCC ONCE CONDUCTORS HAVE BEEN REMOVED.
- REMOVE EXISTING CONTROL PANEL. SALVAGE RADIOS AND NETWORK SWITCH. DISCONNECT RADIO ANTENNA CABLES AND PROTECT FOR CONNECTION TO NEW PLC PANEL. REMOVE ANTENNA CONDUITS BACK AS REQUIRED FOR INSTALLATION AND RECONNECTION TO NEW PLC PANEL, AND COIL THE EXCESS CABLE.
- REMOVE OUTSIDE LIGHTING CONTROLLER AND RELOCATE; COORDINATE NEW LOCATION OF CONTROLLER WITH OWNER.
- REMOVE CONDUCTORS FROM EXISTING WELL VFD TO SPLICEBOX; CAP CONDUITS AT EXISTING VFD.
- EXTEND ALL CONDUIT FROM EXISTING LIGHTING PANEL TO NEWLY PROVIDED SPLICE BOX FOR FUTURE USE, FOR LOADS THAT ARE NOT BEING RE-POWERED.
- CONTRACTOR SHALL DISCONNECT AND REMOVE CONDUIT AND CONDUCTORS TO EXISTING PLC PANEL AS REQUIRED TO TERMINATE IN NEWLY PROVIDED PLC PANEL.

| Revision Number | Revision Description | Drawn By | Checked By | Date |
|-----------------|----------------------|----------|------------|------------|
| 2 | ADDENDUM NO. 3 | JTG | NWC | 05/09/2019 |
| 1 | ADDENDUM NO. 2 | KAG/CAH | TJB | 05/03/2019 |

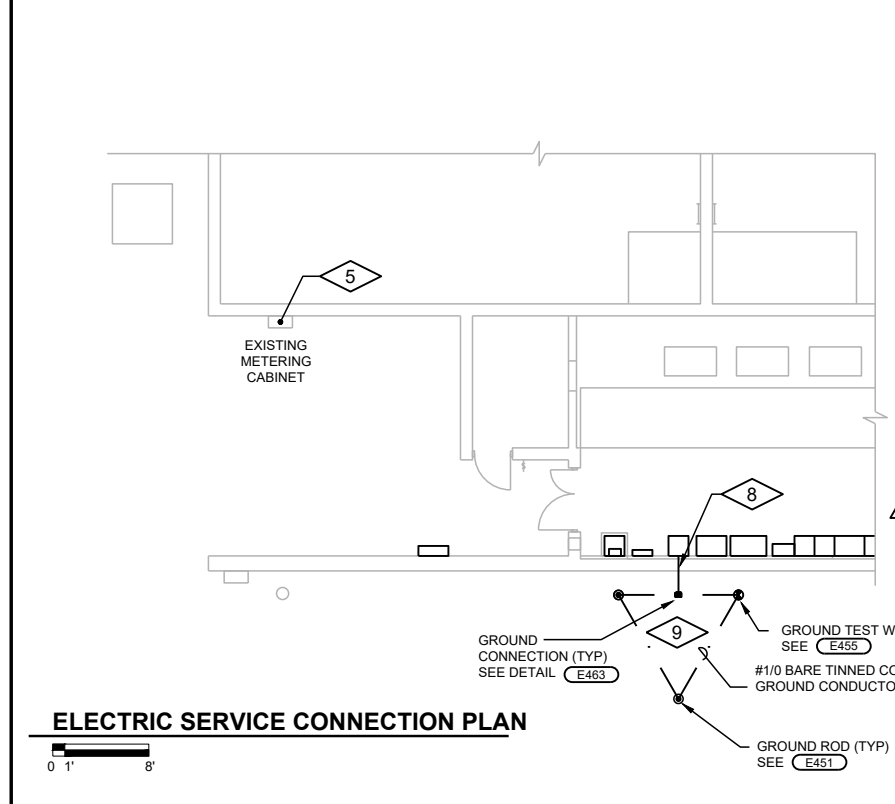
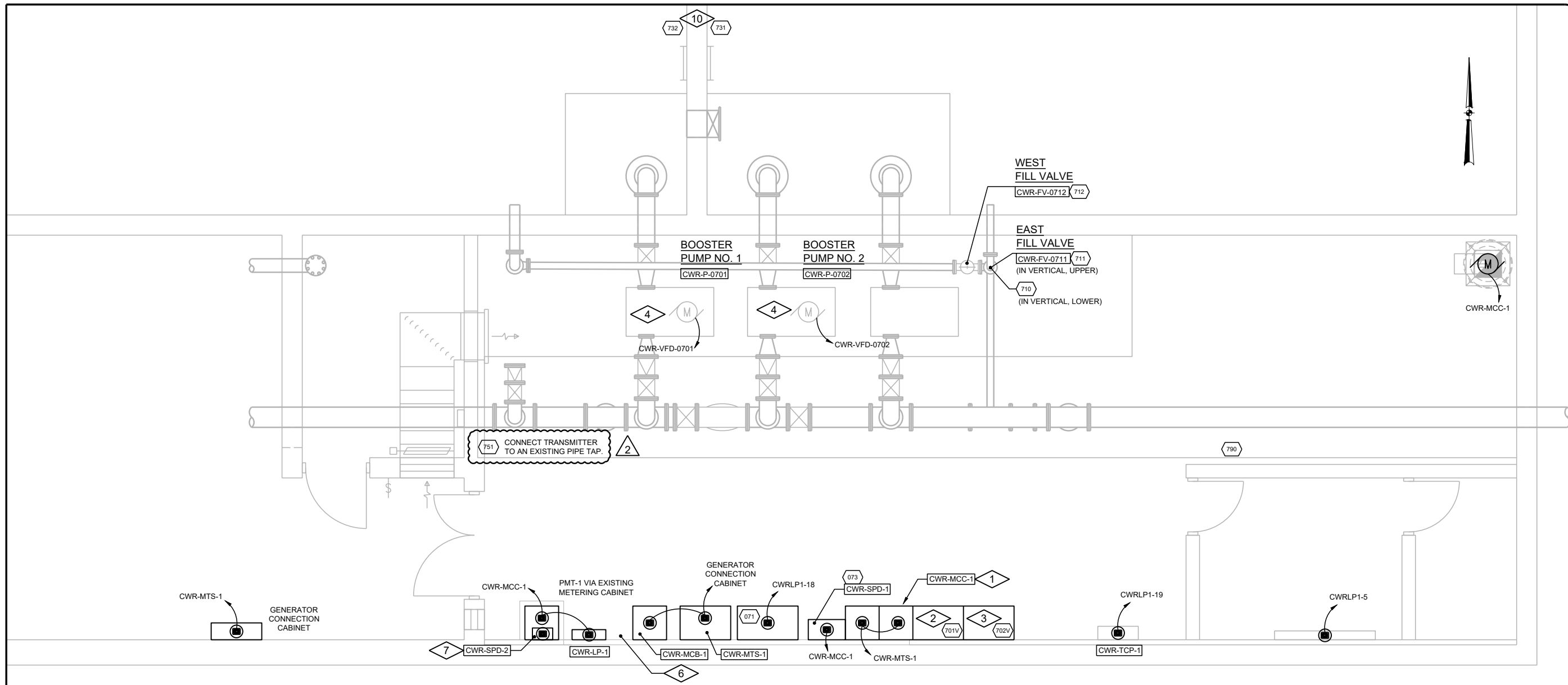
| | |
|--------------|--------------|
| Designed By | SMW/CAH/JRR |
| Drawn By | SMW/CAH/JRR |
| Checked By | JVP/JLW/MBS |
| Approved By | NWC |
| Filename | CWR-RP-1.DWG |
| Project No. | 13288 |
| Project Date | 03/20/2019 |

LAKE COUNTY PUBLIC WORKS
WATER SYSTEM ELECTRICAL AND MECHANICAL UPGRADE
VERNON HILLS, IL
CORPORATE WOODS RESERVOIR
REMOVAL PLAN



Sheet No. 56
Drawing No.

CWR-R-1



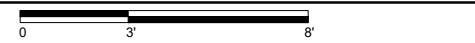
GENERAL NOTES:

1. CONTRACTOR TO FIELD VERIFY DIMENSIONS, ELEVATIONS, AND LOCATIONS PRIOR TO CONSTRUCTION AND/OR FABRICATION.
2. PLASTIC EQUIPMENT MARKERS SHALL BE PROVIDED FOR ALL PUMPS, CONTROL VALVES, AND OTHER DEVICES NEW OR EXISTING. SEE SPECIFICATION SECTION 15190.
3. CONTRACTOR SHALL RUN WIRE IN EXISTING CONDUITS WHERE NOTED. WHERE NOT NOTED, CONTRACTOR HAS OPTION TO REUSE EXISTING CONDUIT OR PROVIDE NEW.

PLAN NOTES:

1. CONTRACTOR SHALL PROTECT CONDUIT AND CONDUCTORS FOR EXISTING EQUIPMENT TO BE RE-FED; SEE DRAWING CWR-ED-1 FOR EXISTING EQUIPMENT TO REMAIN.
2. CWR-VFD-0701
3. CWR-VFD-0702
4. CONDUIT AND CONDUCTORS SHALL BE ROUTED OVERHEAD FROM MOTOR TO VARIABLE FREQUENCY DRIVE.
5. EXISTING METERING CABINET LOCATION.
6. PROVIDE SEPARATE SPLICEBOX TO EXTEND EXISTING LIGHTING PANEL CIRCUITS. PROVIDE SEPARATE SPLICEBOX TO EXTEND EXISTING HEATER POWER CIRCUITS.
7. MOUNT SURGE PROTECTIVE DEVICE ABOVE TRANSFORMER.
8. CONDUIT SHALL PENETRATE RETAINING WALL; SEE (E011) DETAIL. CONTRACTOR SHALL USE DETAIL THAT INCORPORATES LINK SEAL FOR INSTALLATION. PROVIDE 1" GRS CONDUIT FROM EQUIPMENT TO EDGE OF STRUCTURE. PROVIDE DUCT SEAL IN CONDUIT AFTER GROUND CONDUCTOR HAS BEEN PROVIDED TO PREVENT MEANS OF ENTRY VIA CONDUIT.
9. COORDINATE LOCATION AND INSTALLATION OF GROUND TRIAD WITH SITE PIPING AND ELECTRICAL DUCT BANKS; ADJUST GROUND TRIAD AS REQUIRED.
10. TRANSDUCER SHALL BE SUSPENDED FROM WITHIN 20" OF ROOF HATCH OPENING FOR EASE OF REMOVAL.

FLOOR PLAN



| ID | TAG NAME | DESCRIPTION | DETAIL | WIRING | DESTINATION | ID | COMMENTS |
|------|-----------------|---|--------|--------------------|-------------|-----|----------------------------------|
| 071 | CWR-PLC-1 | CORPORATE WOODS RESERVOIR PLC PANEL | N180 | - | - | - | |
| 073 | CWR-SPD-1 | SURGE PROTECTIVE DEVICE | MFR. | (2) #14 | CWR-PLC-1 | 071 | |
| 701V | CWR-VFD-0701 | BOOSTER PUMP NO. 1 VARIABLE FREQUENCY DRIVE | MFR. | (2) TSP (8) #14 | CWR-PLC-1 | 071 | |
| 702V | CWR-VFD-0702 | BOOSTER PUMP NO. 2 VARIABLE FREQUENCY DRIVE | MFR. | (2) TSP (8) #14 | CWR-PLC-1 | 071 | |
| 710 | CWR-FE/FIT-0710 | RESERVOIR FILL FLOWMETER | N380 | (1) TSP | CWR-PLC-1 | 071 | |
| 711 | CWR-FV-0711 | EAST FILL VALVE | MFR. | (4) #14 | CWR-PLC-1 | 071 | |
| 712 | CWR-FV-0712 | WEST FILL VALVE | MFR. | (4) #14 | CWR-PLC-1 | 071 | |
| 731 | CWR-LE-0731 | EAST RESERVOIR SUBMERSIBLE LEVEL ELEMENT | N262 | (1) TSP | CWR-PLC-1 | 071 | VIA VFC TO BREATHER/JUNCTION BOX |
| 732 | CWR-LE-0732 | WEST RESERVOIR SUBMERSIBLE LEVEL ELEMENT | N262 | (1) TSP | CWR-PLC-1 | 071 | VIA VFC TO BREATHER/JUNCTION BOX |
| 751 | CWR-PIT-0751 | SUPPLY SYSTEM PRESSURE TRANSMITTER | N551 | (1) TSP | CWR-PLC-1 | 071 | |
| 790 | CWR-LSH-0790 | PIPE CHASE FLOOD SWITCH | N275 | (2) #14 | CWR-PLC-1 | 071 | |

| Revision Number | Revision Description | Checked By | Date |
|-----------------|----------------------|------------|------------|
| 2 | ADDENDUM NO. 3 | NWC | 05/09/2019 |
| 1 | ADDENDUM NO. 2 | NWC | 05/03/2019 |

| | |
|--------------|---------------|
| Designed By | JRR/JTG |
| Drawn By | JRR/JTG |
| Checked By | MBS/RJN |
| Approved By | NWC |
| Filename | CWR-ENP-1.DWG |
| Project No. | 13288 |
| Project Date | 03/20/2019 |

**LAKE COUNTY PUBLIC WORKS
WATER SYSTEM ELECTRICAL AND MECHANICAL UPGRADE
VERNON HILLS, IL
CORPORATE WOODS RESERVOIR
PLAN**